

Sandfly area

Including: Longley & Allens Rivulet

COMMUNITY BUSHFIRE PROTECTION PLAN

November 2024

Know what to do and where to go when threatened by bushfire.

Low risk

Your first and safest option for survival on high fire risk days:

Leaving early when the Fire Danger Rating (FDR) for your area is Extreme or Catastrophic, or there is a Bushfire Alert for your area.

Remember: leaving early is always the safest option

High risk

If leaving the area is no longer an option:

- A well-prepared property (yours or your neighbour's) that you can actively defend
- The closest built-up area or town away from bushland or trees
- Designated Evacuation Centres

Think about how you will get to these places. Have a plan.

Your safety cannot be guaranteed

Extreme risk

If NO other options are available these are your places of LAST RESORT:

Tasmania Fire Service has identified the following bushfire places of last resort (Nearby Safer Places/ NSPs) for your area:



Lower Longley Sports Oval
Corner of Huon & Hovingtons Road
(next to Lower Longley Hall)
Map Grid: C8 (Longley)

See the map(s) in this plan

Add bushfire places of last resort (NSPs) to your Bushfire Plan and note any others you may know.

TIP: Neighbouring plans may also have bushfire places of last resort (NSPs).

Identifying your own bushfire place of last resort (NSP)

You can also identify a site to use as a bushfire place of last resort if your plan fails, and you are trapped in the area. It should be:

- A large clear area (such as lawn, gravel, dirt or concrete)
- Without flammable vegetation (such as long grass or bush)
- Close and quick to get to
- Safe to get to during a bushfire (not travelling through bush)
- Free of other hazards (such as power lines or traffic)
- Free of other risks to your safety (such as drowning or falling)

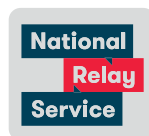
The clear area needs to be large and far away enough from flammable vegetation to protect you from radiant heat from a bushfire. Consider the type and slope of surrounding vegetation, and if there is a structure you can shelter in or behind.

WARNING: there is risk of trauma, injury or death



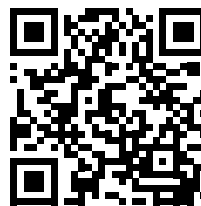
In an emergency call triple zero (000) anywhere in Australia

For people who are deaf or have a hearing or speech impairment there are six ways to contact emergency services. relayservice.gov.au



IMPORTANT: Tasmania Fire Service may not be able to protect you during some bushfires.

SCAN TO PLAN



Scan the code to visit our bushfire safety website. Start your Bushfire Plan, and get your free copy of the *Bushfire Safety Guide* with more information on bushfire places of last resort (NSPs).

BUSHFIRE
WHY RISK IT?

fire.tas.gov.au

Freecall

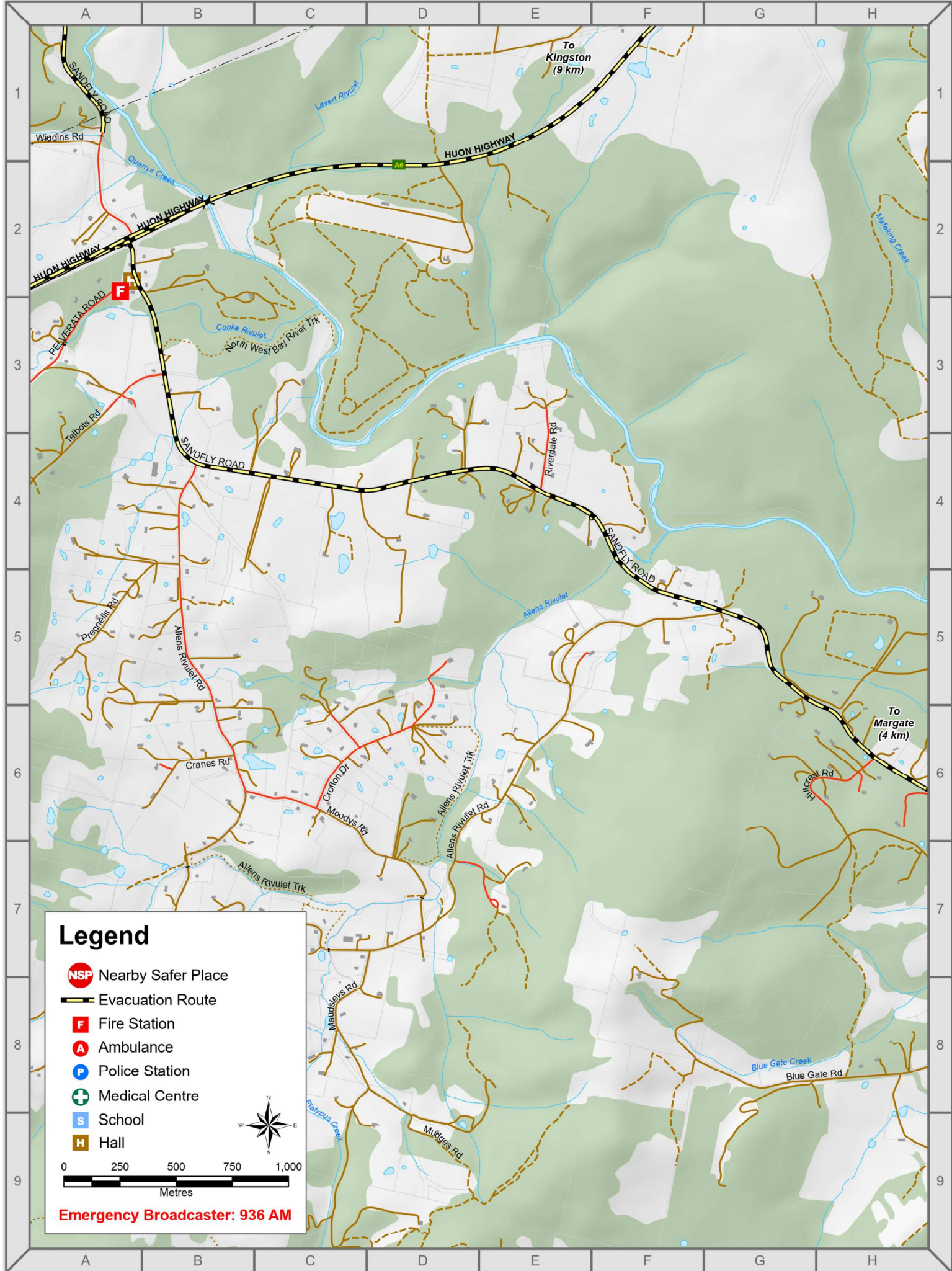
1800 000 699



Tasmania Fire Service

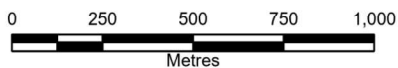


Tasmanian Government



Legend

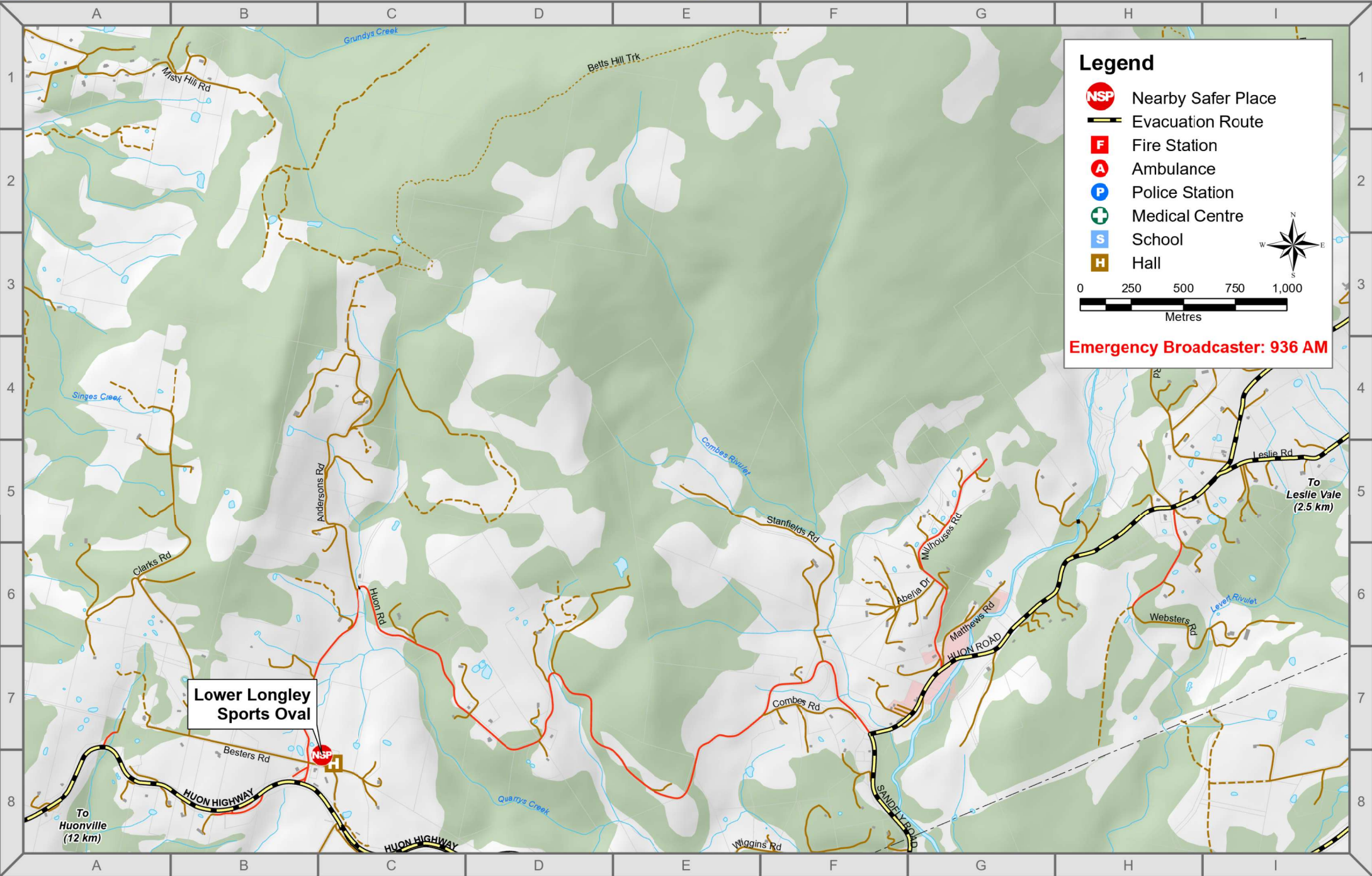
- Nearby Safer Place
- Evacuation Route
- Fire Station
- Ambulance
- Police Station
- Medical Centre
- School
- Hall



Emergency Broadcaster: 936 AM

Map: Longley

Disclaimer: The following map product has been produced by the Tasmania Fire Service.
Basemap: the LIST © State of Tasmania
While all efforts have been taken to ensure the accuracy of this product, there may be errors or omissions in the data presented. Users are advised to independently verify all data for accuracy and completeness prior to use.



Legend

- Nearby Safer Place
- Evacuation Route
- Fire Station
- Ambulance
- Police Station
- Medical Centre
- School
- Hall

0 250 500 750 1,000
Metres

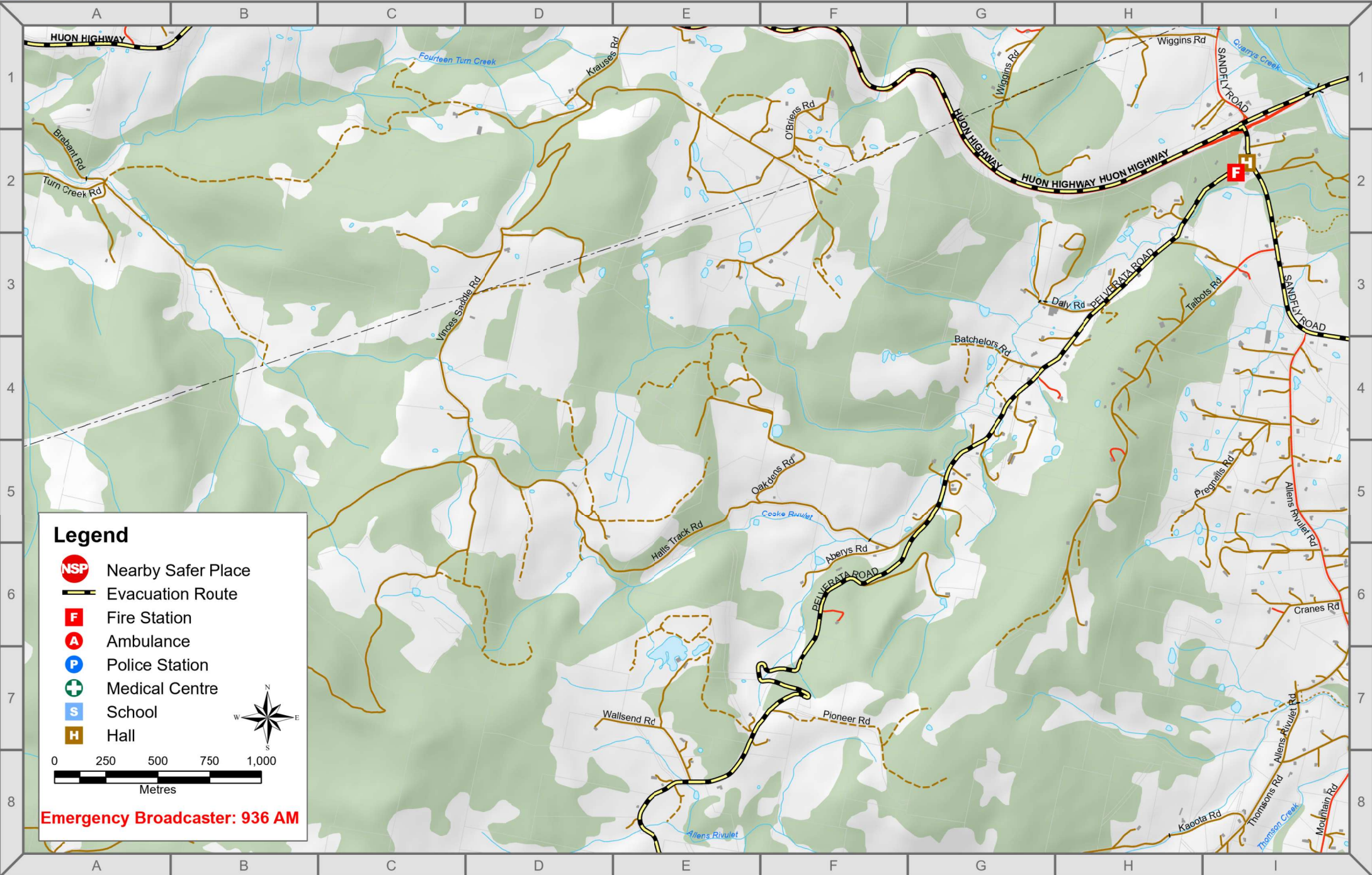
Emergency Broadcaster: 936 AM

Lower Longley Sports Oval

To Huonville (12 km)

To Leslie Vale (2.5 km)

Halls Track Road



Legend

- Nearby Safer Place
- Evacuation Route
- Fire Station
- Ambulance
- Police Station
- Medical Centre
- School
- Hall

0 250 500 750 1,000
Metres

Emergency Broadcaster: 936 AM